

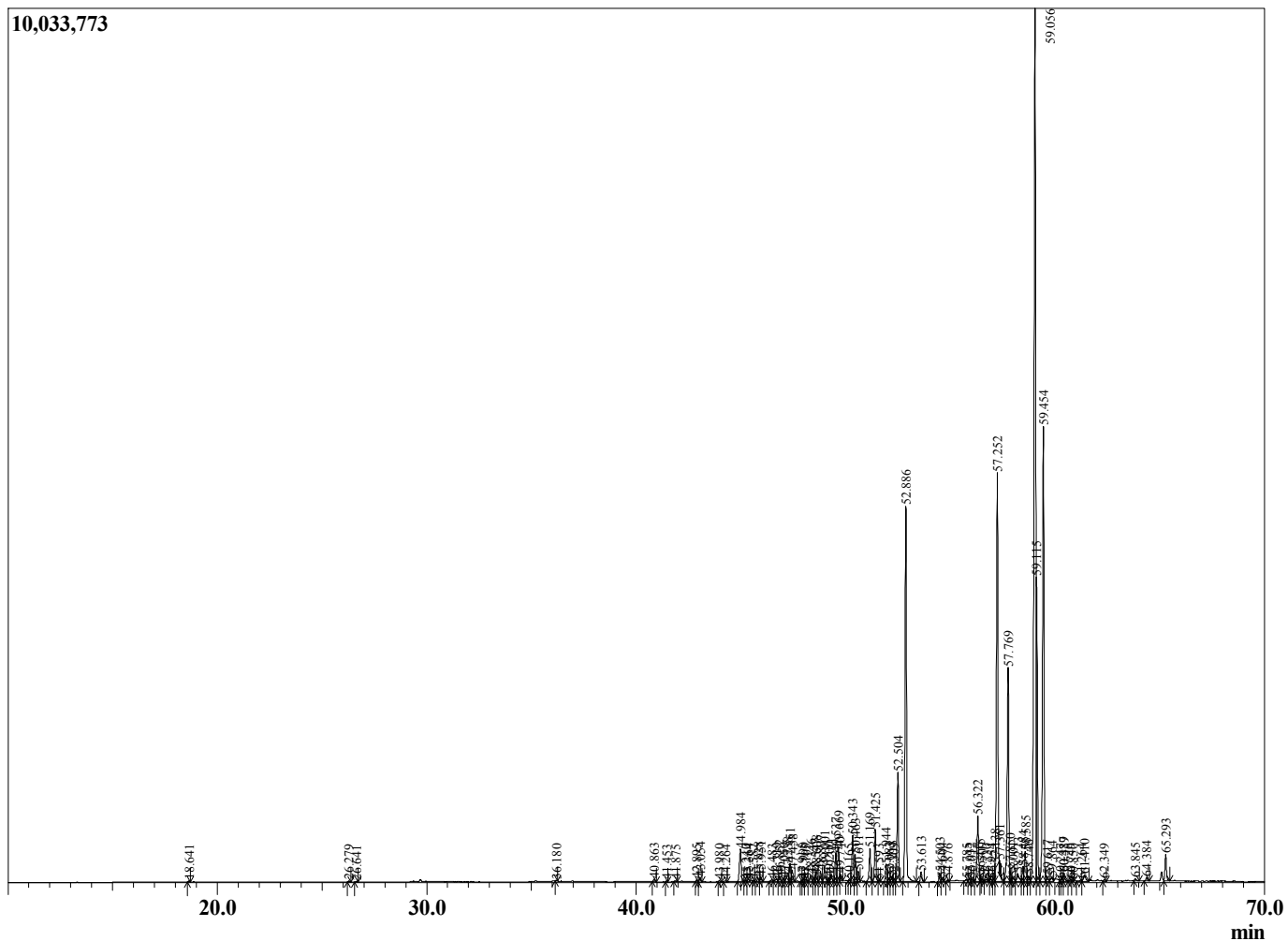
Sample Information

Sample Type : Essential Oil
 Sample Name : Amyris balsamifera

Amyris
 Lot# HAC10-CC
 Country: Haiti



Chromatogram Amyris balsamifera



R.Time	Name	Area%
18.641	Limonene	0.02
26.279	Unidentified	0.03
26.641	Camphor	0.02
36.180	Unidentified	0.02
40.863	Unidentified	0.07
41.453	Unidentified	0.02
41.875	Unidentified	0.03
42.895	Unidentified	0.06
43.054	beta-Elemene	0.10
43.980	Unidentified	0.04
44.264	Unidentified	0.03
44.984	trans-beta-Caryophyllene	1.10
45.240	Unidentified	0.04
45.364	Unidentified	0.06
45.582	gamma-Elemene	0.03
45.828	trans-alpha-Bergamotene	0.11
45.951	Unidentified	0.11
46.483	Unidentified	0.05
46.719	epi-beta-Santalene	0.10
46.852	alpha-Acoradiene	0.14
47.050	(E)-beta-Farnesene	0.07
47.238	alpha-Humulene	0.28
47.351	beta-Acoradiene	0.48
47.458	Unidentified	0.29
47.915	Unidentified	0.02
47.990	Unidentified	0.06
48.105	Unidentified	0.05
48.346	Unidentified	0.18
48.547	trans-Cadina-1(6),4-diene	0.12
48.608	gamma-Curcumene	0.28
48.807	Ar-Curcumene	0.27
49.001	Unidentified	0.45
49.200	delta-Selinene	0.09
49.321	beta-Selinene	0.19
49.537	Valencene	0.78
49.669	alpha-Zingiberene	1.05
49.740	alpha-Selinene	0.15
50.165	Unidentified	0.03
50.343	4-epi-cis-Dihydroagarofuran	1.22
50.463	Unidentified	0.69
50.611	Dihydroagarofuran	0.30
51.169	(-)-alpha-Panasinsen	0.93
51.425	beta-Sesquiphellandrene	1.45
51.593	(E)-gamma-Bisabolene	0.04
51.944	alpha-Maaliene	0.47
52.083	Unidentified	0.09
52.218	Selina-4(15),7(11)-diene	0.13
52.309	Unidentified	0.06
52.504	Selina-3,7(11)-diene	2.89
52.886	alpha-Elemol	10.43
53.613	(E)-Nerolidol	0.25
54.503	Unidentified	0.23
54.604	Unidentified	0.07
54.876	Caryophyllene oxide	0.04
55.785	Guaiol	0.06
55.932	Unidentified	0.09

R.Time	Name	Area%
56.012	Unidentified	0.06
56.322	5-epi-7-epi-alpha-Eudesmol	2.03
56.415	Unidentified	0.21
56.509	Unidentified	0.01
56.730	Unidentified	0.06
56.954	Maaliol	0.06
57.138	Unidentified	0.30
57.252	10-epi-gamma-Eudesmol	12.09
57.361	Unidentified	0.08
57.769	gamma-Eudesmol	6.31
57.850	Unidentified	0.20
58.001	Unidentified	0.14
58.223	Hinesol	0.35
58.484	Unidentified	0.40
58.585	Unidentified	0.87
58.746	Unidentified	0.18
59.056	Valerianol	29.47
59.115	alpha-Eudesmol + beta-Eudesmol	5.82
59.454	7-epi-alpha-Eudesmol	12.64
59.617	Unidentified	0.20
59.864	Unidentified	0.19
60.247	Unidentified	0.05
60.387	Unidentified	0.17
60.429	Unidentified	0.25
60.749	alpha-Bisabolol	0.06
60.850	Unidentified	0.03
61.264	Unidentified	0.06
61.410	Unidentified	0.30
62.349	(2E,6E)-Farnesol	0.05
63.845	Unidentified	0.06
64.384	Unidentified	0.11
65.293	Drimenol	0.75
		100.00